



CALIFORNIA GIRL SCOUT BACKPACKERS

Monte Bello Black Mountain

Monte Bello Open Space Preserve to Black Mountain

Itinerary provided by NorCal BIG

Created: January 2024

Distance: 4 miles, round trip + day hike

Elevation Gain: 633'

Starting Trailhead: Stevens Creek Nature Trail

Finishing Trailhead: Stevens Creek Nature Trail

Best Months: All year round

Permit Limit: 24 people at group site (1 available); 4 per small site (4 available)

Preview: This is a perfect beginner's trip. Located within the Bay Area's Santa Cruz Mountains just outside Los Altos, Monte Bello is an Open Space Preserve topping the east ridge of the Stevens Creek Valley. The loop boasts sweeping panoramic views of sunrise over the Bay Area (San Jose / Mount Hamilton and Umunhum) and sunsets over the Pacific Ocean (Davenport).

Girl Scout Progression Points: Basic navigation, gear comfort, backcountry cooking, bear hanging, tarp/tent set up, basic knots.

Key Risks:

- No overt risks. This itinerary is designed for beginner backpackers.

Sample Itinerary (By Day):

1. Meet at the Monte Bello Open Space Preserve parking lot.
 - Start on the Stevens Creek Nature Trail. Continue onto the Bella Vista Trail, and then the Old Ranch Trail, towards Black Mountain Backpack Camp. (2 miles)
 - After setting up camp, continue on as a day hike to summit Black Mountain Peak (elevation 2,812') via Monte Bello Road. (0.5 miles)
 - Return to Black Mountain Backpack Camp using either the same trail for an out & back or taking additional trails for more of a loop.
2. Hike out in the same manner you hiked in. (2 miles)

DISCLAIMER: Although California Girl Scout Backpackers attempts to keep the content contained in their itineraries up to date and accurate, it is up to each individual to check the accuracy of such information on their own. We assume no liability or make representations or warranties (expressed or implied) of any kind regarding the information provided.

Itinerary Options:

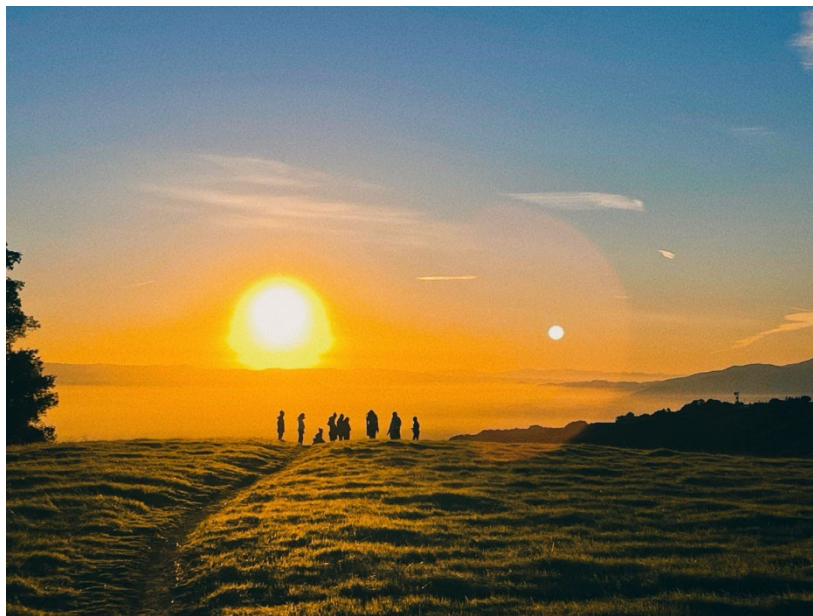
- There is a network of trails in this area, and minor detours are available.

Permits Needed:

- Campsite Permit: [Midpeninsula Regional Open Space District](#)

Resources & Safety Management:

- [Monte Bello Open Space Preserve](#)
- Permit will give you code to gate lock; gates locked sunset-sunrise.
- Pit Toilet and non-potable water source provided at campsite.
- This preserve has almost full cell phone coverage and is well marked and traveled; satellite coverage not needed.



Monte Bello Open Space Preserve

DISCLAIMER: Although California Girl Scout Backpackers attempts to keep the content contained in their itineraries up to date and accurate, it is up to each individual to check the accuracy of such information on their own. We assume no liability or make representations or warranties (expressed or implied) of any kind regarding the information provided.